



POWER INDUCTORS 1008PS SERIES

Features:

- 1.Small size (3.75mm*3.75mm),low profile (2.75mm max Height) SMD type.
- 2.Magnetically shielded.
- 3.High energy storage and low DCR.
- 4.Provided with embossed carrier tape packing.
- 5.Ideal for power source circuits , DC to DC converters ,DC to AC inverters inductor applications.

Part Numbering

(Example)

1008 P S - 472 E M F S
(1) (2) (3) (4) (5) (6) (7) (8)

(1) Size

1008

(2) Shape

P:POWER INDUCTDR

(3) Profile

S:STANDARD

(4) Inductance

473=47uH

(5) Shape

E:FLAT TOP

(6) Tolerance

M: ±20%

K: ±10%

(7) Material

F: FERRITE

(8) Packaging

T: Tape & Reel

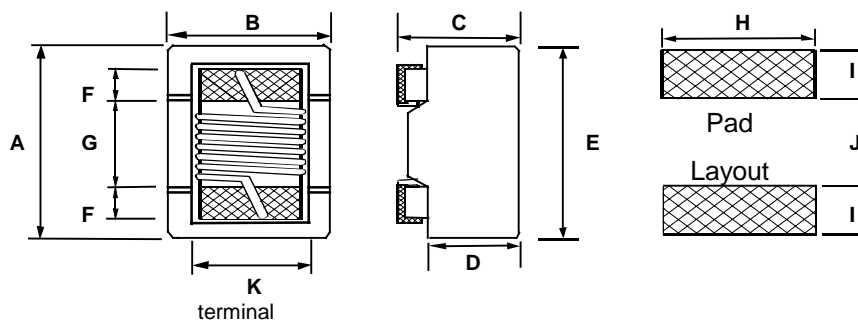


WIRE-WOUND CHIP INDUCTOR (FERRITE) POWER INDUCTORS 1008PS Series(2520)

Part Number	Inductance uH @1MHz	Percent Tolerance	Q Min @1MHz	SRF Min MHz	R _{DC} Max Ohms	I _{sat} (A)	I _{rms} (A)
1008PS-102E_FS	1.0	±20	35	344	0.10	3.00	2.00
1008PS-152E_FS	1.5	±20	35	260	0.10	2.80	2.00
1008PS-182E_FS	1.8	±20	35	225	0.10	2.10	1.90
1008PS-272E_FS	2.7	±20	38	185	0.14	1.30	1.60
1008PS-392E_FS	3.9	±20	38	175	0.26	1.20	1.20
1008PS-472E_FS	4.7	±20	38	160	0.30	1.00	1.10
1008PS-562E_FS	5.6	±20	38	150	0.40	1.00	0.90
1008PS-682E_FS	6.8	±20	38	120	0.50	0.84	0.80
1008PS-103E_FS	10	±20	38	105	0.55	0.78	0.72
1008PS-153E_FS	15	±20	38	35	0.90	0.70	0.60
1008PS-223E_FS	22	±20	40	26	1.20	0.65	0.55
1008PS-333E_FS	33	±20	45	20	1.70	0.51	0.50
1008PS-393E_FS	39	±20	45	16	1.90	0.45	0.47
1008PS-473E_FS	47	±20	45	19	2.20	0.40	0.42
1008PS-683E_FS	68	±20	45	12	2.80	0.31	0.32
1008PS-823E_FS	82	±20	45	9.00	3.10	0.30	0.30
1008PS-104E_FS	100	±20	45	7.00	3.20	0.30	0.30
1008PS-124E_FS	120	±20	50	7.00	3.50	0.25	0.28
1008PS-154E_FS	150	±20	50	5.80	4.00	0.22	0.26
1008PS-224E_FS	220	±20	55	10.0	5.00	0.22	0.21
1008PS-334E_FS	330	±20	55	3.80	7.00	0.20	0.19
1008PS-474E_FS	470	±20	55	3.10	8.20	0.16	0.18
1008PS-564E_FS	560	±20	55	2.80	12.0	0.13	0.15
1008PS-684E_FS	680	±20	55	2.50	13.5	0.12	0.14
1008PS-824E_FS	820	±20	45	1.5	17.0	0.10	0.12
1008PS-105E_FS	1000	±20	45	2.0	18.0	0.10	0.11

Working Temperature : -40 °C - 85 °C

Shape & Dimension



	A		B		C		D Ref.	K	F	G	H	I	J
	Max.	Ref	Max.	Ref	Max.	Ref							
inch	0.148	0.142	0.148	0.142	0.108	0.102	0.065	0.080	0.020	0.060	0.100	0.040	0.050
mm	3.75	3.62	3.75	3.62	2.75	2.60	1.66	2.03	0.50	1.52	2.54	1.02	1.27

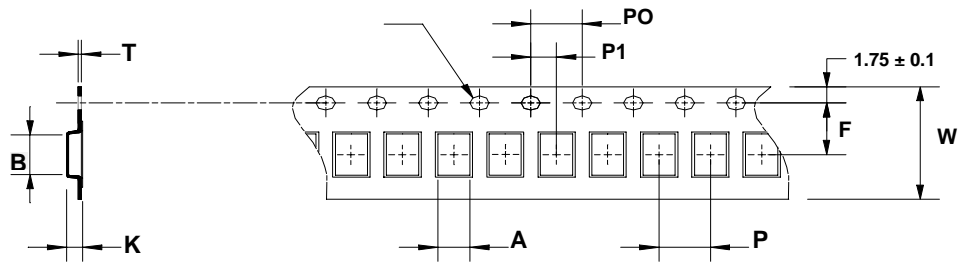
Parts/Reel: 7" 750 pcs

Tape Width: 12mm

Taping Specifications

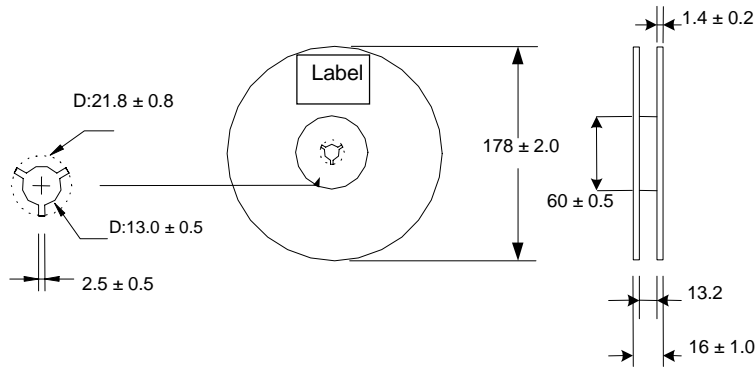
Tape Dimensions (Unit:mm)

$\phi 1.5 +0.1/-0.0$

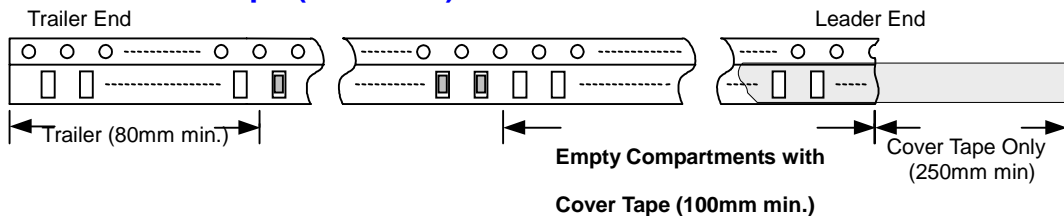


	Tape Dimensions (mm)										Parts (pcs)
	A	B	K	T	F	P	P0	P1	W	7"	
1008PS	4.00	4.05	2.80	0.28	5.5	8	4	2	12	750	

Reel Dimensions (Unit: mm)



Leader / Trailer Tape (Unit: mm)



Peel-off Force

Peel-off force should be in the range of 0.5N~1.3N at a peel-off speed of 300 ± 10 mm/min

